

Panasonic

Plain Paper Laser Fax

Panafax UF-990

- Dual-Line Communication Capability
- 3-Second Super G3 Transmission
- 0.9-Second Quick Scanning
- Quick Memory Transmission
- 600 dpi Printer
- TWAIN Scanner



Dual-Line Communication



0.9
Sec.
scan

70
sheet
ADF

500
sheet
Paper
Capacity

120
page
memory

Max. 1250 Sheets

Max. 760 Pages

2 0 0 1
**Facsimile
Manufacturer
of the Year**
THE CANNATA REPORT

1 9 9 0 - 1 9 9 9
**Facsimile
Manufacturer
of the Decade**
THE CANNATA REPORT



Double Your Communications Power

Doubled Communication Capability Maximizes Your Communication Power & Increases Productivity

No matter how much you use computers and e-mail for document processing and communications, you still need a fax to handle the increasing volume of paper documents generated by today's businesses. In fact, with so many faxes coming and going, one fax machine may not be enough.

Now there's a better solution. The new Panafax UF-990.

With independent dual-line communication capability, the UF-990 doubles your fax transmission/reception power, letting you send and receive simultaneously, send two documents at the same time, or receive two documents at the same time. And that translates into big savings in time and money.

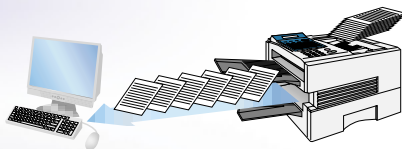
And that's not all. The UF-990 is a complete document management and processing solution. When the fax is not in use, this versatile machine can be used as a high-speed laser printer or image scanner with intelligent document management capability.

Scan-to-PC, PC Printing and Document Management

TWAIN Image Scanner

The UF-990 can also function as a **TWAIN-compatible image scanner**[†], that makes it easy to convert paper documents into PC data (**Scan-to-File**) with sharp, easy-to-read **400 dpi resolution**. 64-level halftone capability ensures smooth, clear reproduction of both text and images — even pages with hard-to-reproduce mixed text and images.

With an ADF, you can load documents with as many as 70 pages (Letter), letting you scan an entire multi-page document at one time.



600 dpi Laser Printer

The UF-990 comes standard with a **built-in parallel interface**, so you can immediately enjoy all the advantages of its versatile PC-linked features. Once you've installed the provided printer driver on your PC, the UF-990 is no longer just a fax. It's a high-quality **laser printer** offering the same high **600 x 600 dpi**^{*} resolution as a dedicated PC printer[†].



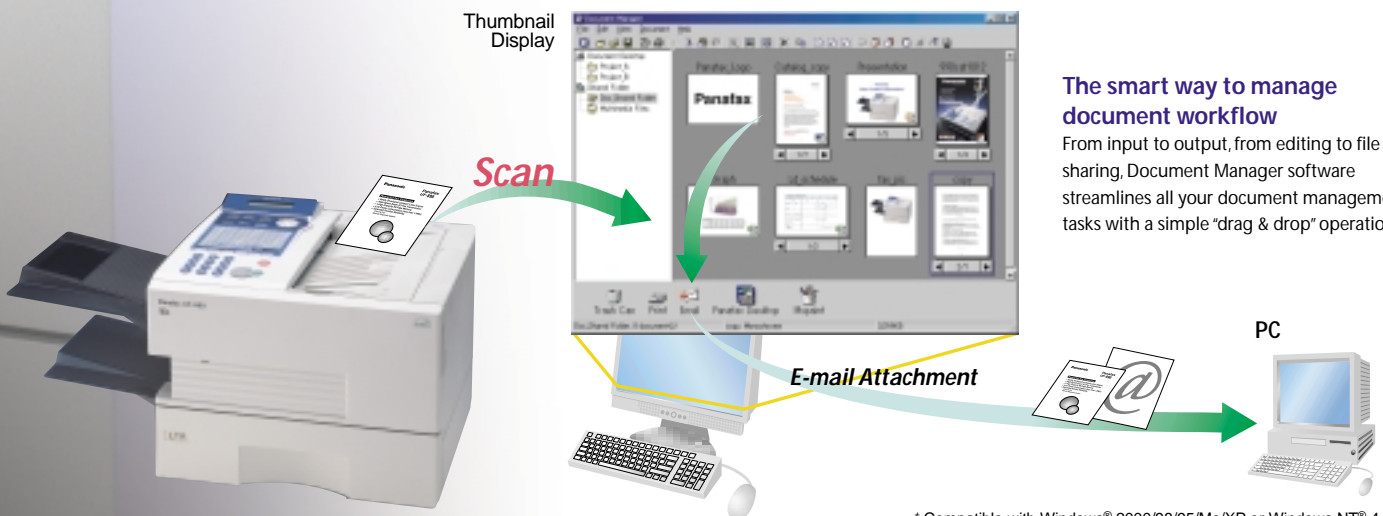
* 600 dpi printing requires the addition of an optional 4 MB (UE-410034F) or 8 MB (UE-410057F) DRAM card.

Enhanced Printing Quality

For users who require even higher printing quality, the optional **PCL6 Page Description Language** emulation kit is also available. It allows the UF-990 to serve as a powerful PC printer[†] able to rival even top-quality dedicated printers.

Document Manager Software

For scanning and document management right out of the box, the UF-990 comes with its own convenient, easy-to-use **Document Manager** software[†]. Scanned data can be efficiently managed, edited and even shared by network PCs. The Document Manager software makes it easy to send documents via e-mail — just attach them directly to e-mail messages with a simple "drag & drop" operation (**Scan-to-E-mail**). Also included is the Panafax Desktop software which allows you to send a fax directly from your PC via the UF-990 without having to print it out.



The smart way to manage document workflow

From input to output, from editing to file sharing, Document Manager software streamlines all your document management tasks with a simple "drag & drop" operation.

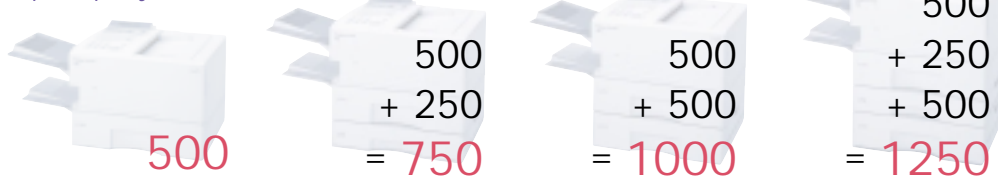
[†] Compatible with Windows® 2000/98/95/Me/XP or Windows NT® 4.0

Expandable Design Ready To Handle as Much Volume As You Need

Ultra-High Paper Capacity

With faxes coming in all day and all night, nobody has time to keep restocking the machine with paper. That's why the UF-990 comes standard with 500-sheet paper capacity to keep things running smoothly even in the busiest office. And if that's not enough, optional paper feed units are available so you can boost paper capacity up to **1,250 sheets**.

Paper Capacity (Sheets)

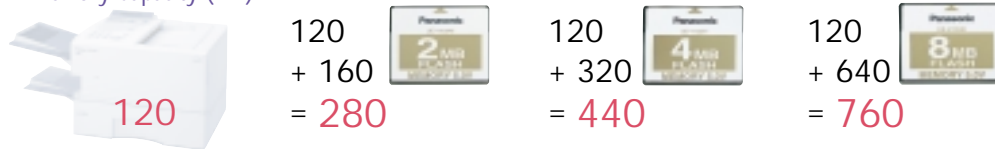


High-Capacity Memory

The already high-volume standard memory can hold up to 120 pages*. Optional flash memory cards allow capacity to be expanded to an incredible **760 pages*** to ensure smooth, continuous operation even when large amounts of documents are being faxed or copied.

* Based on ITU-T Image No.1 scanned in Standard mode.

Memory Capacity (MB)



12,000-Page All-In-One Print Cartridge

Featuring an all-in-one design that includes toner, developer, and drum for quicker replacement, this long-life cartridge simplifies maintenance and has a service life of approximately **12,000 pages***.

* Based on ITU-T Image No. 1 scanned in multiple copy mode, yield may vary according to operating conditions.



Energy Saving Design And Panafax Assured Reliability

Ultra-Low Power Consumption

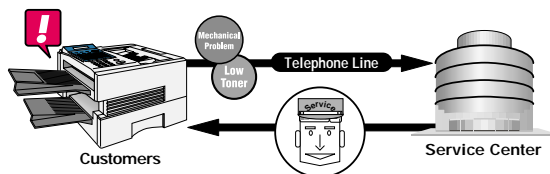
Thanks to our Energy Saver technology, the UF-990's power consumption has been reduced to a mere **1.2 Wh** in the sleep mode.

Extended Reliability

The UF-990's **Check & Call** function automatically reports low toner status and certain mechanical problems to a service center where our **Remote Diagnostic System** enables our expert technicians to quickly locate any problems via a telephone line and provide you with a solution.



As an ENERGY STAR® Partner, Panasonic has determined that this product meets the ENERGY STAR® guidelines for energy efficiency.



Check & Call





High-End Fax Transmission & Reception

Dual-Line Communication Capability

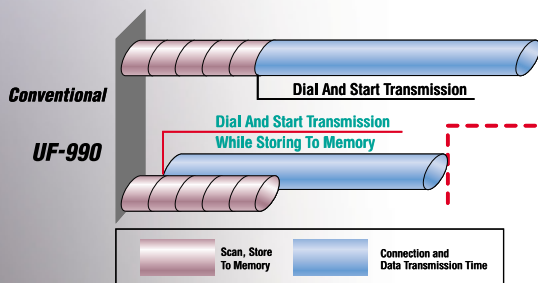
Installing the optional communication unit in the UF-990 maximizes fax communication performance by putting two completely separate communication lines at your disposal. You'll be able to keep incoming and outgoing faxes flowing smoothly and efficiently at all times by taking advantage of simultaneous transmission/reception or by using one line exclusively for transmission and the other for reception.

0.9-Second Quick Scan & 70-Sheet ADF

Built primarily for high-volume faxing power, large volume fax transmissions are a snap. The UF-990's quick **0.9-Second** scanning capability lets you get your original document back from the machine right away, while the standard-equipped Automatic Document Feeder holds up to **70 pages** at a time. You can leave the fax machine and go back to work immediately.

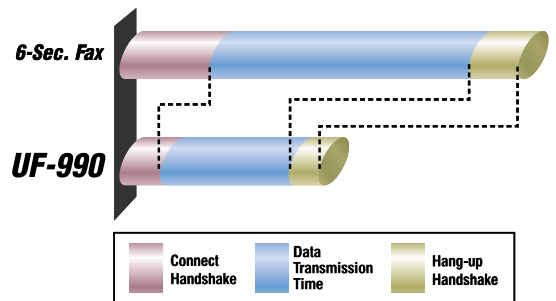
Super Fast Fax Transmission

With **Quick Memory Transmission**, the UF-990 dials as soon as the first page has been scanned. You can continue to scan additional pages while transmission is taking place, increasing your office's productivity.



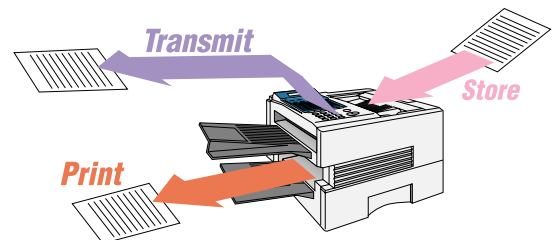
3-Second Super G3 Transmission with JBIG Compression

Fully compliant with the ITU-T V.34 standard, the UF-990's **Super G3 33.6 kbps fax** modem transfers a high-quality full-page image in as few as three seconds*3. Thanks to the advanced **JBIG compression** image coding, fax documents are effectively transmitted while halftone images are clearly reproduced at the remote destination.



Triple-Access Multi-Tasking Capability

True multi-tasking capability allows this versatile machine to perform **multiple jobs at the same time**. For instance, during memory fax transmission, you could also print out a PC document and store another document in memory for the next transmission.



Features

- Auto Dialer
 - One-touch: up to 40 stations
 - Abbreviated: up to 160 stations
 - Digit of Telephone number (up to 36 digits)
- Program keys (up to 8 Programs)
- Multi-Tasking Operation
- Directory Search Dialing
- Directory Sheet Print
- Intelligent Redial (up to 5 files)
- Chain Dialing
- Distinctive Ring Detector (DRD)
- Quick Memory Transmission
- Multi-station Transmission (up to 270 stations)
- Real time Batch Transmission
- Delayed Batch Transmission
- Automatic Memory Retransmission
- Deferred Transmission
- Deferred Multi-station Transmission
- Priority Direct Transmission
- Edit File Mode with View Mode
- Automatic Cover Sheet
- Receive to Memory
- Substitute Reception
- Selective Reception
- Number of memory job files (Max. 70 files)
- Fax Forward
- File Transmission
- Polling / Multi-station Polling
- Deferred Polling/Deferred Multi-Station Polling
- Continuous Polling
- Memory Polling Transmission (1 file)
- Confidential Mail Box *1
- Password Transmission/Reception *1
- ITU-T Sub-address Transmission
- Panasonic Super Smoothing (Fax/Copy)
- 64-Level Halftone (Fast/Quality)
- Automatic/Fixed Reduction
- Overlapping Print
- Collation Stack
- Verification Stamp
- Communication Journal with image data
- Header/Total Page Print
- Transaction Journal with view mode
- Fax Access Code (Fax Lock)
- Department Code
- PIN Code Access
- Multiple Logo (up to 24 logos)
- Multi-Purpose LCD Display (20 x 2 lines)
- Multiple Copy with Sorting (up to 99 copies)
- Reduction Copy
- Energy Saver
- Remote Diagnostic
- Check & Call Function

- Printer Interface
- Scanner Interface
- PC-Fax software
- Document Manager
- Document Viewer with Annotation Function

Control Panel



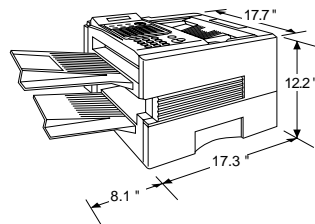
Option

- 250-sheet Universal Paper Feed Unit (UE-409057)
- 500-sheet Universal Paper Feed Unit (UE-409056)
- 2-1/4-/8 MB Flash Memory Card (UE-410046F/UE-410047F/UE-410048F)
- 4-/8 MB D-RAM Memory Card (UE-410034F/UE-410057F)
- Handset Kit (UE-403168)
- Page Description Language Printer Interface Kit (UE-403169)
- G3 Communication Port Kit (UE-407019)

Consumable

- All-In-One Print Cartridge (toner/developer/drum) (UG-5520) 12,000-page Toner *2

Dimensions



UF-990 Specifications

Compatibility	ITU-T Group 3, ECM	
Modem Speed	33,600 - 2,400 bps with automatic fallback	
Coding Scheme	MH/MR/MMR/JBIG	
Transmission Speed	Approx. 3 seconds / page *3	
Document Size	Max. 11.0" x 78.7" (280 mm x 2000 mm) (with operator's assistance) Min. 5.8" x 5.0" (148 mm x 128 mm)	
Effective Scanning Width	9.9" (252 mm)	
Automatic Document Feeder	70 sheets	
Document thickness	Single sheet: 0.0024" - 0.0060" (0.06 - 0.15 mm) Multi-sheet: 0.0024" - 0.0039" (0.06 - 0.10 mm)	
Scanning Resolution (Fax)	Standard: 203 dots/inch x 98 lines/inch (8 dots/mm x 3.85 lines/mm) Fine: 203 dots/inch x 196 lines/inch (8 dots/mm x 7.7 lines/mm) Super Fine: 203 dots/inch x 391 lines/inch (8 dots/mm x 15.4 lines/mm) 406 dots/inch x 391 lines/inch*4 (16 dots/mm x 15.4 lines/mm)	
Scanning Speed	Approx. 0.9 seconds/page (Letter, Standard mode)*5	
Recording Method	Laser printing on plain paper	
Recording Speed	Approx. 10.2 pages/minute (Letter)*8	
Recording Paper Size	Letter / Legal / A4, cut-sheet on plain paper	
Effective Recording Width	8.2" (208 mm) (Letter)	
Recording Paper Capacity	500 sheets (using 20 lb. (75-g/m ²) paper) With optional cassette(s): Approx. 750, 1000 or 1250 sheets	
Recording Resolution	Fax / Copy	406 dots/inch x 391 dots/inch
	Printer	600 dots/inch x 600 dots/inch
Image Memory Capacity	Approx. 120 pages*6	
Optional Memory Card	Base Memory plus approx. 160/320/640 pages*6	
Printer / Scanner Interface	Bi-directional Parallel (IEEE1284)	
Scanner Driver	TWAIN	
Scanning Resolution (PC)	400 dots/inch x 400 dots/inch	
Power Requirements	99 - 138 V AC 47 - 63 Hz Single phase	
Power Consumption	Sleep Mode: Approx. 1.2 W Max.: Approx. 470 W	
Dimensions (W x D x H)	17.3" x 17.7" x 12.2" (440 mm x 450 mm x 310 mm)*7	
Weight	35.2 lbs. (16 kg)*7 (Excluding consumable supplies and optional equipment)	

*1 Panafax proprietary features work only with selected Panafax machines.

*2 Based on ITU-T Image No. 1 scanned in multiple copy mode, set on fine resolution and using letter size recording paper. Yield may vary according to operating conditions and environment where the machine is installed.

*3 Transmission time applies to memory transmission of text data using only ITU-T Image No. 1 between the same models at maximum modem speed. Transmission time may vary in actual usage. Usually public telephone lines can only support communications speeds of 28.8 kbps or lower. Via PBX, transmission speed may fall back to a lower speed.

*4 Interpolated resolution (Optical Resolution: 203 dots/inch x 391 lines/inch)

*5 Scanning speed applies to the feeding process from the top to the end of a single page test chart.

The time for the feeding process does not include the time that it takes for the top edge of the page to reach the scanning point and page ejection. Time for entire storing process is not applied.

*6 Based on ITU-T Image No.1 scanned in Standard mode.

*7 Dimensions and weight are approximate.

*8 In multiple copy mode excluding the first copy.

Super G3 is the classification given to a type of facsimile that conforms to the 33.6 kbps transmission method standardized in accordance with the ITU-T V.34 recommendation. Windows and Windows NT are registered trademarks of Microsoft Corporation. ENERGY STAR is a U.S. registered mark.

All other brand or product names are the property of their respective holders.

Design and specifications are subject to change without notice.

ISO 9001 Quality Management System

Every aspect of Matsushita Graphic Communication Systems, Inc. (MGCS)'s office information equipment business processes, from manufacturing to marketing, conforms to ISO (International Organization for Standardization) 9001 quality management system standard.

Design, development, manufacture, installation, repair and maintenance of office information equipment, their associated devices and consumables.



In addition, MGCS's plants outside Japan have acquired ISO 9002 certification.

Panasonic®

Panasonic Document Imaging Company
Business Unit of Matsushita Electric Corporation of America
Two Panasonic Way Secaucus, NJ 07094
For a local dealer, please call 1-800-742-8086.
<http://www.panasonic.com>